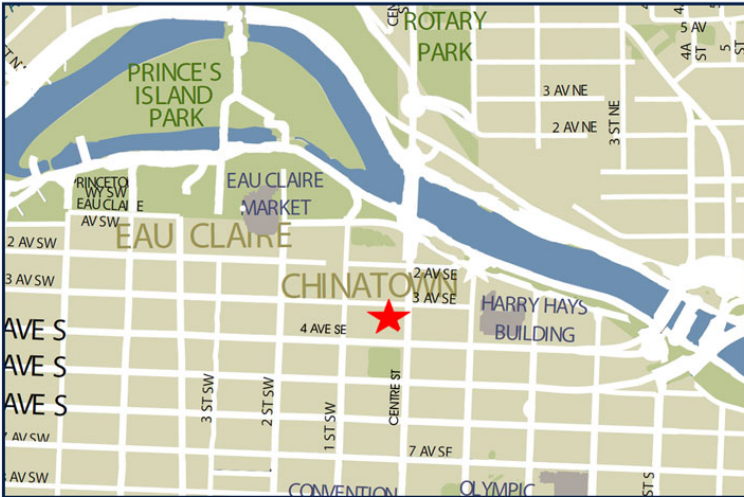


FOR LEASE

ASIA PACIFIC CENTRE OFFICE LEASING OPPORTUNITY



PROPERTY FACTS

ADDRESS	100 4th Street SW
MARKET	Calgary, Alberta
TOTAL BUILDING SIZE	87,687 SF
NUMBER OF FLOORS	10
PARKING	Underground and street

For more information, please contact :

DALE COUPRIE

Senior Leasing Agent

Cell : (403) 852 4448 Fax : (403) 228 4439

dcouprie@bowriverleasing.com

BOW RIVER PROPERTY MANAGEMENT AND LEASING

B250 2210, 2nd Street, SW

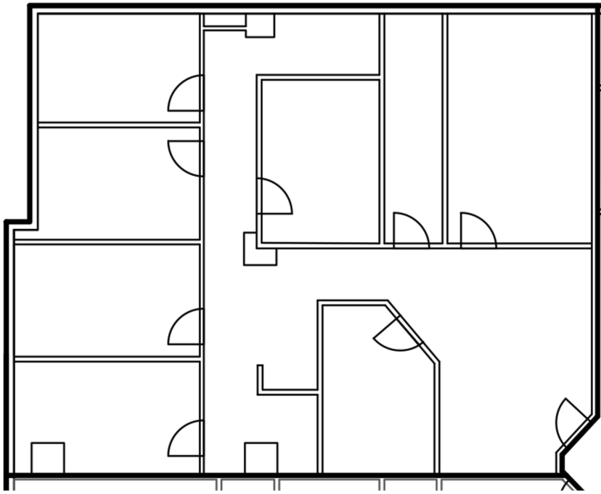
Calgary, AB. T2S 3C3

<http://ebingbong.com>

518

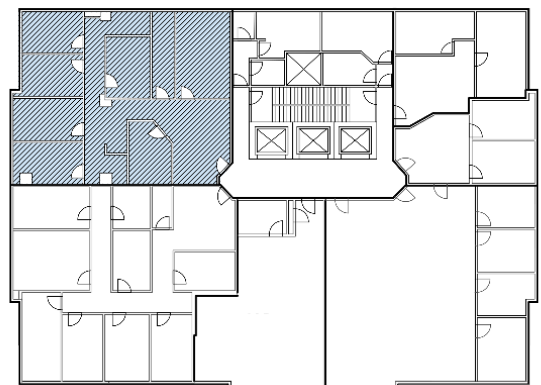
100 4 Avenue SW, Calgary AB

FOR LEASE
ASIA PACIFIC CENTRE
OFFICE LEASING OPPORTUNITY



SUITE COMMENTS

- * Lots of glass.
- * Storage area.
- * Open kitchen area.
- * Available concurrently with suite 510 for nearly 5000 square feet.
- * Photocopier vestibule
- * Storage areas
- * Board room.
- * view : Downtown
- * Board room
- * Storage
- * Reception area
- * Kitchen area
- * Sink(s)
- * Server room
- * Telephone hub
- * Data hub
- * Furniture available
- * 2473 sf
- * 5 Floor



KEY PLAN

For more information, please contact :

DALE COUPRIE

Senior Leasing Agent

Cell : (403) 852 4448 Fax : (403) 228 4439

dcouprie@bowriverleasing.com

BOW RIVER PROPERTY MANAGEMENT AND LEASING

B250 2210, 2nd Street, SW

Calgary, AB. T2S 3C3

<http://ebingbong.com>